



**Join our growing network**

Name \_\_\_\_\_

Address \_\_\_\_\_

\_\_\_\_\_ Zip \_\_\_\_\_

Phone \_\_\_\_\_

Email \_\_\_\_\_

Dance Studio or Company Affiliate  
\_\_\_\_\_

**Membership Level:**

Individual Professional or Student: \$25 per year

Dance Studio or Organization: \$45 per year

\*Renewals due one year from the month you join.

Make your check payable to:

Martha Connerton/Kinetic Works

(Earmarked for KinetiCollective Membership)

1609 Nassau Blvd.

Charlotte, NC 28205

Your membership is tax deductible

Join online at: [www.mckineticworks.org](http://www.mckineticworks.org)



1609 NASSAU BLVD.  
CHARLOTTE, NC 28205

MARTHA CONNERTON/KINETIC WORKS



MARTHA CONNERTON/KINETIC WORKS

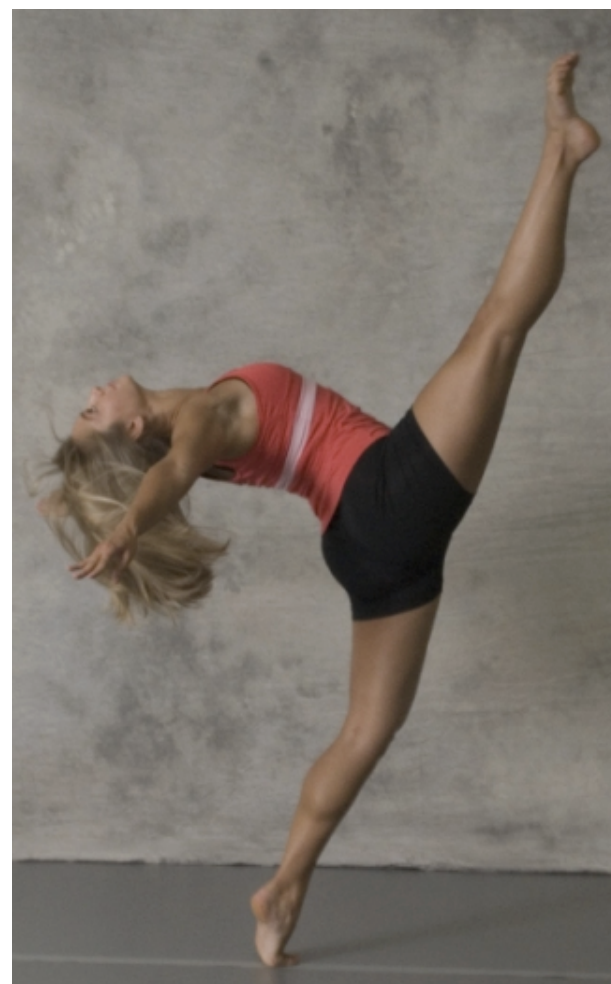
Non-Profit  
US Postage  
Paid  
Permit #3890  
Charlotte, NC

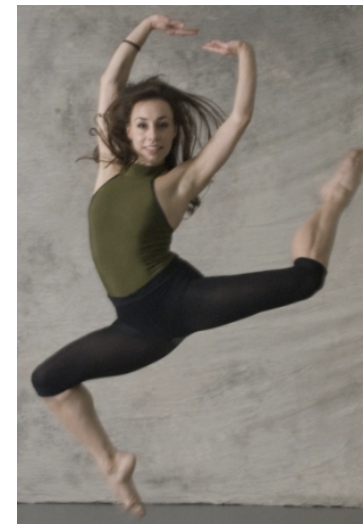
# KinetiCollective

## MEMBERSHIP

SUPPORT GROUP FOR DANCE  
PROFESSIONALS AND STUDENTS

A SUBSIDIARY ORGANIZATION OF  
MARTHA CONNERTON/KINETIC WORKS





# STRENGTH IN NUMBERS

## What is THE KINETICCOLLECTIVE?

**Martha Connerton/Kinetic Works** has a mission to serve the dance community in Charlotte and the Carolinas.

As a member of KINETICollective you will be part of a growing network of artists like yourself. Students, professionals, choreographers, studio owners, teachers, even artists in other disciplines can benefit from the array of services we offer.

### We are here to serve your needs.

#### Examples:

Need affordable studio space? Need to raise money for a dance project? You can use KWorks as a non-profit umbrella to solicit tax-deductible contributions or apply for a grant.

Need to learn how to prepare a resume or apply for a grant? Need arts related legal advice? Contact Kinetic Works and we will put you in touch with professionals who can help you at low or no cost.

Need to find a videographer or other service provider? Our network of artists can refer someone to you.

## How do I join the KINETICCOLLECTIVE?

Just fill out the registration form on the back page.

Mail your check for the appropriate membership amount.

Wait to receive your membership card and you are done.

#### Membership Levels:

Individual Professional or Student: \$25.00

Dance Studio or Organization: \$45.00

Visit us online at:  
[www.mckineticworks.org](http://www.mckineticworks.org)

Or contact us at:  
[marthacon2@aol.com](mailto:marthacon2@aol.com)  
(704) 338-1533

## What do I get as a Member?

**Discounted rental rates on KWorks studio.**

Members can rent for \$5-10/hour.

### Fiscal Agency

**for independent choreographers and unincorporated groups.**

For a small administrative fee we will manage your grant for you.

**Workshops on grant writing, budgeting, project development, technology etc.**

**Networking and news about events, jobs, auditions, opportunities**